

# Learning Disability Partnership Board Report December 2008

## What we have done since December 2007:



### **Partnership Board Meetings**

We meet at Hove Town Hall six times each year. Hove Town Hall is a good place to meet. It is accessible and has lots of parking and buses nearby.

Sandy Edwards takes care of our meetings for us.



### **Partnership Board Members**

There are 27 people on the Partnership Board. Some are family carers and some have learning disabilities. Some of the people work for the council and some work for other organisations.

We have two co-chairs. One is Councillor Maria Caulfield. The Speak Out Advocacy Groups Network elects the other co-chair. They elected Matthew Hellett this year. Both of our co-chairs are new this year.

Sarah Pickard helps the people with learning disabilities and Nicola Lytle helps the family carers.

Karen Kingsland is our development worker. She helps the whole Partnership Board and the co-chairs.

### **Partnership Board Website**

We decided to call our website [www.brightpart.org](http://www.brightpart.org). Karen looks after the website.

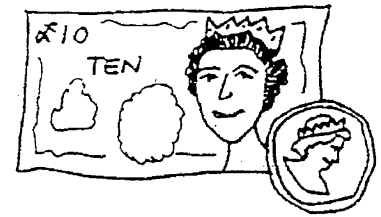
Each sub group has a page on the website. Karen helps them have good web pages.



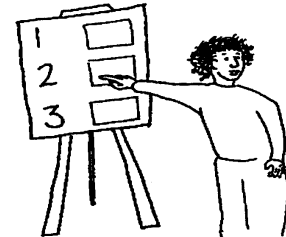
### **Partnership Board Achievements**

- Chose a new logo and gave the website a name.
- Had a presentation from the Valuing People Support Team about Valuing People Now
- Told the government what we think about Valuing People Now
- Helped the Changing Places campaign because we want better public toilets for disabled people
- Decided what to do with this year's LDDF money

- Chose a better way to allocate the LDDF money in the future
- Checked on our LDDF projects.
- Decided what to do with next year's LDDF money
- Learnt about:



- Family Carers Service
- Training for Staff
- Care Management Reviews
- How Person Centred We Are in Brighton & Hove.
- How people with learning disabilities register with the library service so they do not have to pay for CDs and DVDs

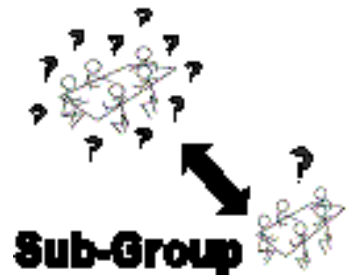


- Checked on the Community Learning Disability Team's safeguarding work
- Got a new sub group for Work & Skills
- Agreed to the new Learning Disability Commissioning Strategy
- Agreed to the 'New Idea' for a day options team in the day services



### **Partnership Board Sub groups**

Sub Groups do work for the Partnership Board. Each group has a web page on [www.brightpart.org](http://www.brightpart.org) if you want to know more about them.



Healthy Lives sub group helps people with learning disabilities have better access to health care and looks after the Health Facilitator and Health Action Planning Project.



Person Centred Approaches sub group found out 'How Person Centred Are We' and looks after the 'Self Directed Support Project'



Taking Part in the City sub group used to be called 'Better Lives'. They look after day services, adult learning and employment as well as leisure, transport, community support services, and community safety.



Work & Skills sub group started in October because there is so much work to do in that area.

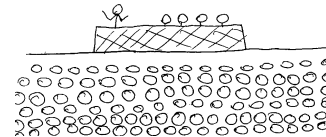


Workforce Development sub group make sure staff can do their jobs well. They also help mainstream staff be more helpful for people with learning disabilities. This year they made the good practice guide, 'Choosing My Staff'.



A Place to Live sub group looks at what housing there is for people with learning disabilities and makes sure there are good choices.

### **Fora (forums) that work with the Partnership Board**



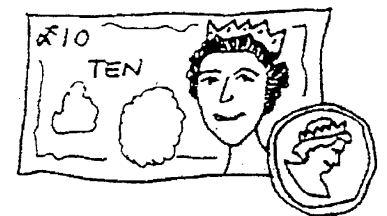
Transitions Forum looks at what happens when people with disabilities become adults and looks after the 'Person Centred Transition Planning' project.



Learning Disability Providers' Forum is for organisations that get money from the council to help people with learning disabilities

### **Learning Disability Development Fund (LDDF)**

This is money the government gives us to make Valuing People happen. We use that money to pay for special projects. There were 16 special projects last year and there are 12 special projects this year.



### **Last Year's LDDF:**

LDDF projects last year	Amount of money
Partnership Board Expenses	£15,000

Money we saved to spend on next year's Self-Directed Support and Partnership Board Development projects	£18,000
Advocacy Groups Network	£38,350
• Speaking up groups; Big Meetings; lobbying	
Blue Camel Club	
• Four Blue Camel Clubs; steering committee of learning disabled people	£14,385
Better Work Options	
• Learning resource; business opportunities; art-selling group; accredited training	£24,500
Carers Forum	
• Information and support sessions for carers	£5,625
Day Services Development & Equal Project	
• Project management; support for Better Lives Steering Group & Improving Day Services group	£31,518
Direct Payments / Individual Budgets	
• Work on Direct Payments and Individualised budgets	£12,037
Health Action Plans and Better Health	
• Improve health services for people with learning disabilities	£15,300
How Person Centred Are We	
• Measured how we are doing on person-centred planning	£10,000
LINK Project	
• 6 Big Meetings; 6 Partnership Board Meetings; work with Sub Groups	£14,961
Older Carers	
• Information and planning for older people caring for someone with a learning disability	£15,564
Parents with Learning Disabilities	
• Group and information sessions run by parents	£5,653
Person Centred Transition Reviews	
• Person Centred Transition Reviews in schools; work with parents; link with national initiative	£15,339
Self Directed Support	
• Self-Directed Support for individuals; work with assessment teams; new Resource Allocation System	£15,000
Spiral Shop	
• Work skill training and experience; volunteering and work for 10 people.	£15,000

### Travel Buddy Scheme

- 20 trained travel buddies; 20 people with learning disabilities supported; future funding looked for £15,500

### Voluntary work Project

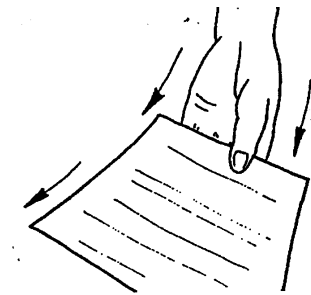
- 8 more people doing voluntary work; 25 people helped to continue their voluntary work; helping other providers know about supporting voluntary work £6,588

### ***Highlights from 2007 - 2008 projects***

- The can-recycling project works with over 15 business and 20 people with learning disabilities.
- The Carers Forum and Brighton & Hove Council had a housing information event.
- The Link group made a DVD for training GP practices.
- The Travel Buddy Scheme got praise as a "good practice" example against harassment (August '08) and as part of the Car Free Day (September '08) and, as part of an Award for Accessibility in the 2008 UK Bus Awards.
- Melvin Redwood was in the papers and on TV because he got his first paid job, at the age of 64.
- "Our Art" sold and exhibited art at 10 exhibitions and Deirdre Waller had a solo exhibition at Hangleton library. A partnership with Creative Futures means "Our Art" gets shown with other disadvantaged local artists in exhibitions including the Brighton Festival.
- Service Users at Belgrave Day Service formed a Person-centred planning group and found out what other service users in other services think of person-centred planning.
- Carers and professionals had an information session about Health Action Planning.
- An information pack about learning disabilities and a training package were developed and delivered to GP practices.
- The council will now offer training and nationally recognised qualifications for adults with learning disabilities.
- 2 Travel Trainees who were supported by Travel Buddies began travelling independently.
- Buckingham Road Day Service established "Feast" so service users do catering.
- One man got to work at Starbucks at Gatwick Airport which he always wanted to do.
- Feedback about people's person-centred plans goes to the Person Centred Planning group.
- GP practices were helped to make a list of all their patients who have a learning disability.

### ***This Year's Projects***

- Partnership Board Expenses £8,000
- Advocacy Groups Network £38,800
- Better Work Options £39,875
- Carers Link Group £8,543
- Carers Support – Family Involvement in personalised approaches £14,547
- Developing the Wider Workforce £5,500
- Health Action Plans and Better Health £19,000
- Partnership Board Development Worker £20,853
- Person Centred Transition Reviews £12,995
- Self Directed Support £12,753
- Supported Volunteer Work Scheme £24,823
- LINK Project £14,961
- Travel Buddy Scheme £10,350



We will tell you more about this year's projects in our next report.

*(Karen Kingsland wrote this annual report)*